

GME

GX620

**FULLY FEATURED
VHF MARINE
HANDHELD
RADIO**



INSTRUCTION MANUAL

CONTENTS

| | | | |
|---------------------------------|----|--|----|
| INTRODUCTION | 3 | Keypad Lock | 11 |
| CAUTION | 3 | Channel 16 | 11 |
| FEATURES | 4 | Last Channel Memory (LCM) ... | 11 |
| STANDARD PACKAGE INCLUDES | 4 | Dual Watch/Triple Watch Mode | 11 |
| OPTIONAL ACCESSORIES..... | 4 | Channel Scan | 12 |
| RADIO CONTROLS..... | 5 | Priority Scan | 13 |
| FITTING THE BATTERY PACK..... | 6 | Key Beep | 13 |
| Fitting | 6 | Display & Keypad Backlight | 13 |
| Removal | 6 | Battery Level | 13 |
| BATTERY CHARGING..... | 6 | Power Save | 13 |
| FUNCTIONS | 7 | INTERNATIONAL USA & CANADIAN MODES..... | 14 |
| LCD DISPLAY | 9 | SAFETY REQUIREMENTS | 14 |
| BASIC RADIO OPERATIONS | 9 | TROUBLESHOOTING..... | 14 |
| RADIO FEATURES EXPLAINED | 10 | TECHNICAL SPECIFICATIONS..... | 15 |
| Volume Level | 10 | INTERNATIONAL FREQUENCY PLAN | 16 |
| Function (Menu) Mode..... | 10 | FREQUENCY PLAN - CANADA..... | 17 |
| Channels | 10 | FREQUENCY PLAN - USA | 18 |
| Power High/Low | 10 | WARRANTY | 19 |
| Squelch Level Adjustment | 10 | GME AFTER SALES SERVICE | 19 |
| Monitor | 11 | | |

INTRODUCTION

Congratulations on purchasing this GME fully featured VHF Marine radio. Your GX620 has been built to offer excellent value by combining advanced features, great design and manufacturing quality.

To ensure you are familiar with the operation and features of your radio, and in order to obtain the best performance, please read this manual thoroughly before operation.

CAUTION

IMPORTANT: READ ALL INSTRUCTIONS carefully and completely before operating your radio and retain this manual for future reference.

NEVER: connect the radio to a power source other than the supplied battery. This may damage your product.

NEVER: operate your radio with the antenna less than 5 cm from exposed parts of the body.

NEVER: use the radio in or near a mining facility or other area which uses remotely triggered explosives or an area labelled 'Blasting Area'.

NEVER: use or charge your radio in a potentially explosive atmosphere.

DO NOT: place your radio in front of a vehicle air bag.

DO NOT: operate your radio on board an aircraft.

DO NOT: use your radio with a damaged antenna.

DO NOT: attempt to modify your radio in any way.

ALWAYS: charge your radio at normal room temperature.

ALWAYS: switch off your radio where notices restrict the use of two-way radio or mobile telephones.

ALWAYS: replace the accessory jack cover when the jack is not in use.

AVOID: submerging your radio into water. It is not submersible.

AVOID: storing or charging your radio in direct sunlight.

AVOID: storing or using your radio where temperatures are below -20°C or above $+60^{\circ}\text{C}$.

FEATURES

- Complete International/USA and Canadian channel plans
- Easy to read large backlit LCD
- Simple 3/1 Watt switchable power
- Priority Scan
- Water resistant to IP54
- Drop in style semi-quick charger
- Flexible antenna and carry case

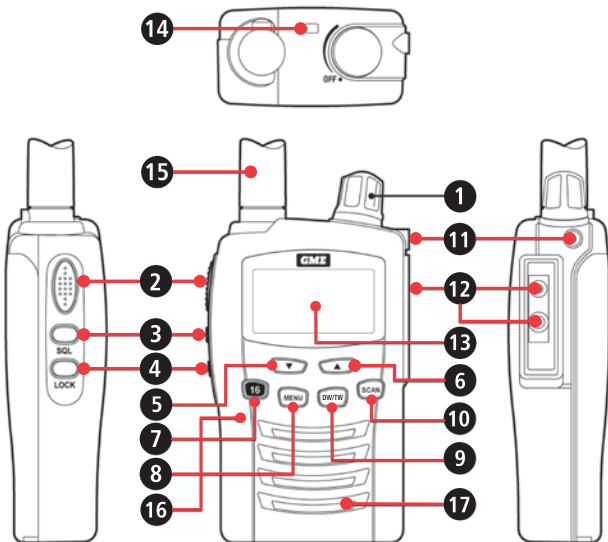
STANDARD PACKAGE INCLUDES

- GX620 Radio
- Replaceable Flexible Antenna
- Li-Ion Battery Pack (1000 mAh)
- Charging Cradle
- Carry Case
- Instruction Manual
- 12 V DC In-Dash Adapter

OPTIONAL ACCESSORIES

- BCT005 – Power Adaptor
- BP006 – 1850 mAH Heavy Duty Li-Ion Battery
- BC003 – Speaker Microphone

RADIO CONTROLS



- | | | |
|--|--|-----------------------------|
| 1 Power On/Off and Volume Control knob. | 6 Up Button ▲ | 12 Accessory Jack |
| 2 PTT Button | 7 Channel 16 Button | 13 LCD Display |
| 3 Squelch/Monitor Button. | 8 Menu Button | 14 Lanyard fix point |
| 4 Keypad Lock Button | 9 Dual Watch/Triple Watch Button. | 15 Antenna |
| 5 Down Button ▼ | 10 Scan/Priority Scan Button | 16 Microphone |
| | 11 Jack Cover | 17 Speaker |

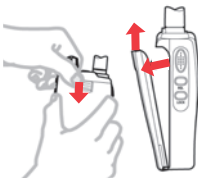
FITTING THE BATTERY PACK

FITTING



1. Ensure that your radio is switched **OFF**.
2. Align the bottom of the battery pack with the securing slots at the back of the radio.
3. Press the top of the battery into the back of the radio until it 'clicks' home.

REMOVAL

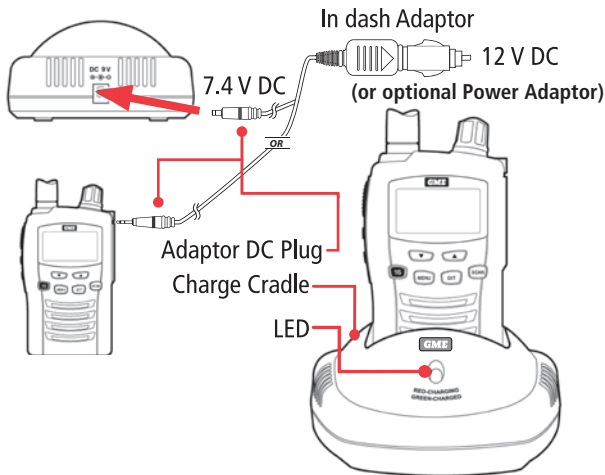


1. Ensure that your radio is switched **OFF**.
2. Press down on the battery release catch and separate the battery pack from the radio.

BATTERY CHARGING

To charge your radio, there are 2 options. Prior to charging, disconnect any radio accessories and ensure the radio is switched **OFF**. Then carefully follow one of the following options:

1. Connect the 12 V in-dash adaptor to a 12 V socket:
 - a. Connect the female adaptor power plug to the charging cradle.
 - b. Insert the radio into the charging cradle until it 'clicks' home. The charger LED will glow red and charging will start. If the charger LED blinks red and green or the charger LED does not light, re-insert the radio into the charging cradle. When the battery is fully charged the charger LED will turn green.
 - c. The battery charging time is typically 4 to 5 hours.
2. Connect the 12 V in-dash adaptor to a 12 V socket:
 - a. Remove the jack cover on the side of the radio and connect the male adaptor into the top accessory jack. The charging cradle is not required for this option.
 - b. The battery charging time is typically 8 to 10 hours via the accessory jack.



FUNCTIONS

1. Power On/Off/Volume Control

Turn the knob clockwise to switch the radio **ON** and increase the volume, turn counter-clockwise to decrease the volume and switch the radio **OFF**. The radio will emit a confirmation tone when it switches **ON**.

2. Push-To-Talk (PTT) Button

Press and hold this button to speak (transmit) and release the button to hear (receive) messages. You can only communicate with other VHF Marine Band radios when the channel is the same as yours.

3. Squelch Control/Monitor Button

Press this button briefly to change the Squelch level in combination with ▲ and ▼ buttons. Press and hold this button to activate or deactivate the MONITOR function.

4. KEYPAD LOCK Button

Press this button briefly to activate or deactivate the keypad lock function.

5. DOWN Button ▼

Pressing this button will decrease the channel number. In some modes this button is used to adjust the function setting.

6. UP Button ▲

Pressing this button will increase the channel number. In some modes this button is used to adjust the function setting.

7. Channel 16 Button

Press this button briefly to enter the channel 16. To return to the normal channel operation, press this button briefly again.

8. MENU Button

Press this button briefly to activate the function MENU. Press the button again (repeatedly) to step through the function **MENU**. Press and hold this button to return to the previously used channel.

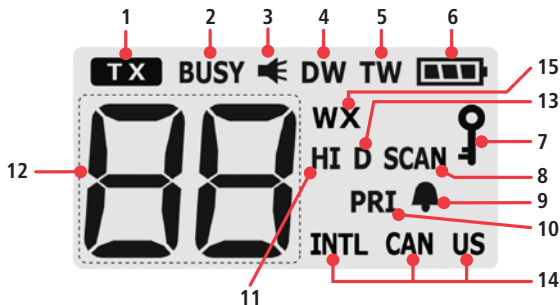
9. DUAL WATCH/TRIPLE WATCH Button (DW/TW)

Press this button briefly to activate and deactivate the Dual Watch. Press and hold to activate or deactivate the Triple Watch. Pressing this button briefly again during execution Triple Watch will change the mode to Dual Watch.

10. SCAN/PRIORITY SCAN Button

Press this button briefly to activate or deactivate the scan mode. For Priority scan press and hold the SCAN button. The radio will alternatively scan the Priority channel and the entire VHF Marine Band. Briefly press the scan button to stop the scan.

LCD DISPLAY



- | | | |
|-----------------------|---------------------------|---------------------------------|
| 1. Transmit Icon | 7. Keypad Lock Icon | 13. Duplex Icon |
| 2. Receiver Busy Icon | 8. Scan Icon | 14. Channel Plan Icons |
| 3. Monitor Icon | 9. Key Beep Icon | 15. Weather channels (US only). |
| 4. Dual Watch Icon | 10. Priority Channel Icon | |
| 5. Triple Watch Icon | 11. High Power Icon | |
| 6. Battery Icon | 12. Channel Indicator | |

BASIC RADIO OPERATIONS

The VHF Marine radio service shares channels on a 'take turns' basis. This means that other users and groups may be using any channel. To communicate with other Marine radios, all units must be switched to the same channel.

1. Switch your radio **ON**.
2. Ensure you are on the same channel as the other party (see function Mode).
3. To speak, hold the radio upright, about 10 cm from your mouth and press the **PTT** button, the '**TX**' icon will appear in the radio display. Speak normally and clearly towards the radio. Release the **PTT** button when you finish speaking. You will hear messages from other radios that are within range on the same channel. The Busy icon will appear in the radio display when you receive a message.

VOLUME LEVEL

To adjust the volume level, use the **POWER ON/OFF/VOLUME CONTROL 1**. To increase the volume turn this control clockwise, to decrease the volume turn this control counter-clockwise.

FUNCTION (MENU) MODE

The MENU mode allows you to set-up and edit the basic functions. To access the MENU mode, press the **MENU** button briefly. Each press of the **MENU** button steps the radio sequentially through the different functions. The radio display indicates the current function, the present setting and associated icon flash. Use the **▲** or **▼** button to change the setting. Press the **PTT** or **MENU** button or wait for 5 seconds to store your choice. If you do not press any key for 5 seconds your radio will return to stand-by mode automatically.

CHANNELS

This radio operates on any one of the VHF Marine Band radio channels. To communicate with other VHF Marine radios, all units must be switched to the same channel. To change the radio channel, press the **▲** or **▼** button when the radio is in stand-by mode.

POWER HIGH/LOW

This feature permits selection of the transmit power level to HIGH (3 Watts) or LOW (1 Watt). The LCD indicator will display 'HI' when it is in the high power mode. Using low power, the radio will have a lower transmit range but the battery life will be increased.

Press both the **PTT** button and the **▼** button to select LOW power. The LCD indicator, 'HI' will disappear. To return to high power, press again the **PTT** and **▲** button.


SQUELCH LEVEL ADJUSTMENT

This function allows you to adjust the Squelch level of your radio. To change the Squelch level, press the **Squelch/Monitor** button briefly. The current Squelch setting will appear. Use the **▲** or **▼** button to change the setting. Press the **PTT**

button or wait for 5 seconds to store your choice. There are 8 Squelch levels. Level 91 is the most sensitive (open) and level 98 is the least sensitive (closed). Auto (Ao) is the optimum factory setting and 'Off' is fully open, with constant static noise.

MONITOR

The Monitor function is used to briefly check for activity on the current channel. It is the same as setting the Squelch level to level 91 or fully open.

To activate or deactivate the Monitor press the **Squelch/Monitor** button **3** for about 2 seconds. The Monitor icon  will appear and you will hear background static noise.

KEYPAD LOCK

To toggle the Keypad Lock, briefly press **Keypad Lock** **4** button. The Keypad Lock icon  appears when the lock is on.

CHANNEL 16

The channel 16 (Distress channel) **7** is used to initially contact another radio station for emergency communications. This channel is automatically monitored during Dual Watch and Triple Watch. Upon stand-by, you must monitor channel 16.

LAST CHANNEL MEMORY (LCM)

The previously used channel is memorised every time you press the **PTT** button. To re-visit this channel press and hold the **MENU** button **8**.

DUAL WATCH AND TRIPLE WATCH MODE

Dual Watch mode allows you to monitor two channels; a Working channel and Dual Watch channel. The Dual Watch channel must be channel 16, this is preset by factory default. When a signal is received on either channel the unit will pause before resuming Dual Watch.

To activate Dual Watch mode, first select a radio channel (see 'Channels') as the Working channel. This is done by simply selecting a channel using the **▲** or **▼** keys. Once you have selected the Working channel, a brief press of the **DW/TW** key will activate the Dual Watch.

The radio display will alternate between the Working channel and channel 16. The Dual Watch icon '**DW**' will appear in the radio display.

To deactivate Dual Watch press the **DW/TW** button briefly again.

Triple Watch mode allows you to monitor three channels; a Working channel, the Dual Watch channel (channel 16) and a Priority channel that you can select. A selected Priority channel is working as the third channel. If the third channel (one Priority channel) has not been selected, the Triple Watch will not start and there will be an error beep.

When a signal is received on one channel among the three, the unit will pause before resuming the Triple Watch.

To activate **Triple Watch mode** first select a Working channel, this is done by simply selecting a channel using the ▲ or ▼ keys. Then select a Priority channel, this is done by pressing the **MENU** button once then selecting a channel by using the ▲ or ▼ keys. Once a Priority channel has been selected, press the **PTT** button or wait for 5 seconds to store your choice. Press and hold the **DW/TW** button. The radio display will alternate among the Working channel, channel 16 and the Priority channel. The Triple Watch icon '**TW**' will appear.

To deactivate Triple Watch press and hold the **DW/TW** button again. Pressing the **DW/TW** button briefly will select Dual Watch mode.

If you press the **PTT** button whilst receiving a signal in Dual Watch or Triple Watch mode the radio will transmit on the currently displayed channel. If you press the **PTT** button when no signal is present the radio will transmit on the Working channel. Dual Watch and Triple Watch will resume approximately 5 seconds after the transmission.

CHANNEL SCAN

The Channel Scan can be used to find or detect users on other radio channels. To activate/deactivate the Channel Scan, press the **Scan** button briefly. The Scan icon 'SCAN' will appear when the Channel Scan is active. Scanning will only stop when you deactivate the Scan function. The radio will scan through the whole VHF Marine Band channels. If your radio detects a valid signal the Scan will pause for about 5 seconds. If you press the **PTT** button when your radio detects a signal, the radio

will transmit on the same channel. Press the ▲ or ▼ button to resume scanning immediately. If you press the **PTT** button during scanning, an error beep will be heard and your radio will continue to scan.


PRIORITY SCAN

Priority Scan allows the user to scan all channels whilst monitoring the Priority channel. In between each channel being scanned, the radio scans the Priority channel. Select a Priority channel, this is done by pressing the **MENU** button once then selecting a channel by using the ▲ or ▼ keys. Press the **PTT** button or wait for 5 seconds to store your choice. Then press and hold the Scan button for 2 seconds, the radio will commence Priority Scan.

The Priority channel icon 'PRI' will appear when one Priority channel has been selected.

KEY BEEP

If the Key Beep is activated, your radio will emit a confirmation tone whenever you use the keypad. You can activate or deactivate the Key Beep as required.


To change the Key Beep setting, press the **MENU** button until the Key Beep icon '' appears. Use the ▲ or ▼ button to change the setting. Press the **PTT** or **MENU** button or wait for 5 seconds to store your choice.

The Key Beep icon '' will appear when Key Beep is active.

DISPLAY & KEYPAD BACKLIGHT

The display and keypad backlight will illuminate for 5 seconds whenever any button (except for the **PTT** button) is pressed.

BATTERY LEVEL

The Battery icon '' indicates when the battery level is low and the battery needs recharging.

POWER SAVE

To conserve battery power the radio will automatically enter Power Save mode after a short period of inactivity. There is no user setting for Power Save.

INTERNATIONAL/USA AND CANADIAN MODES

The GX620 comes with the International Channel Plan (INTL) as the default setting. Canada or the USA Channel Plans can be accessed (this includes the relevant weather channels) as follows:

1. Press and hold **MENU** and **LOCK KEYS** together, turn the radio **ON**.
2. Use up **▲** or **▼** keys to change the mode: International 1 (No Display), International 2 (INTL), Canada (CAN) and USA (US). International 1 and International 2 Channel Plans are equivalent to each other.
3. Press the **MENU** key to confirm.
4. Turn the radio **OFF**.
5. Turn the radio **ON**.

SAFETY REQUIREMENTS

For recharging the battery, use the specifically supplied GME in-dash adaptor or the optional GME AC power adapter.

TROUBLESHOOTING

If you experience problems with your GX620 VHF Marine Handheld Radio. First check the battery power level as low battery can cause problems such as poor transmission, weak reception and reduced sound quality. Then check the manual and radio display to ensure that a function (such as 'Lock') has not been activated by accident.

If these steps do not solve the problem reset your unit as follows:

1. Switch the radio **OFF**.
2. Press and hold the **MENU** button, **▼** button and **PTT** button together.
3. Switch the radio **ON** and press the **MENU** button.
4. Turn the radio **OFF** and turn it **ON** again.

This will reset the radio to the factory settings and should resolve most problems.

TECHNICAL SPECIFICATIONS*

GENERAL

| | |
|------------------------|---|
| Complies with: | AS/NZS 4415.2:2003 |
| Frequency Range: | 156.025 to 162.025 MHz |
| Channel Set: | International Channels, USA, Canada, USA weather channels. |
| Modulation: | FM |
| Frequency Stability: | ± 5.0 ppm |
| Dual Watch: | Monitor time - 180 ms/over 2 sec. |
| Scan Speed: | 10 ch/sec. |
| Channel Spacing: | 25 kHz |
| Supply Voltage | |
| Range: | Int. battery 7.4 V DC nom. |
| Battery Life Stand-by: | 10 hours |
| Current Drain: | Stand-by: 40 mA Receive: 150 mA Transmit: 1.2 A @ Hi 550 mA @ Lo |

TRANSMITTER

| | |
|----------------------|--|
| Output Power: | Low 1 Watt, High 3 Watts |
| Frequency Deviation: | ± 5 kHz max + 20 dB limiting @ 1 kHz. |
| Frequency Response: | + 6 dB per octave, 300 kHz Max. |
| Demodulated S/N: | > 40 dB weighted |
| Modulation: | ± 5 kHz Max. |
| Current Consumption: | High: 1.2 Amp Low: 550 mA |

RECEIVER

| | |
|---------------------|---|
| Receiver Type: | Double Conversion Super Heterodyne |
| Sensitivity: | 12 dB SINAD: -120 dBm |
| IF Frequencies: | 1st: 21.4 MHz 2nd: 450 kHz |
| Modulation | |
| Frequency Response: | -6 dB per octave 300 Hz-3 kHz, +1-3 dB |
| Intermodulation | |
| Rejection: | > 65 dB |
| Blocking Rejection: | > 90 dB |
| Spurious Rejection: | > 65 dB |
| Audio Output Power: | 500 mW @ 8 Ohms |
| Audio S/N: | > 40 dB |
| Conducted Spurious | |
| Emission: | > -57 dBm |

MECHANICAL

| | |
|------------------|-----------------------|
| Unit Dimensions: | 98 H x 62 W x 30 D mm |
| Unit Weight: | 180 g approx. |

ENVIRONMENTAL

| | |
|--------------------|----------------|
| Water/Dust | |
| Resistance: | IP54 |
| Temperature Range: | -10°C to +60°C |
| Compass Safe | |
| Distance: | 200 mm |

EXTERNAL CONNECTIONS

| | |
|-------------|-------------------|
| Microphone: | 3 pin speaker mic |
|-------------|-------------------|

***All specifications are typical and
subject to change
without notice or obligation.**

INTERNATIONAL FREQUENCY PLAN

| CH | Frequency (MHz) | | CH | Frequency (MHz) | |
|-----------|-----------------|---------|-----------|-----------------|---------|
| | Transmit | Receive | | Transmit | Receive |
| 1 | 156.050 | 160.650 | 61 | 156.075 | 160.675 |
| 2 | 156.100 | 160.700 | 62 | 156.125 | 160.725 |
| 3 | 156.150 | 160.750 | 63 | 156.175 | 160.775 |
| 4 | 156.200 | 160.800 | 64 | 156.225 | 160.825 |
| 5 | 156.250 | 160.850 | 65 | 156.275 | 160.875 |
| 6 | 156.300 | 156.300 | 66 | 156.325 | 160.925 |
| 7 | 156.350 | 160.950 | 67 | 156.375 | 156.375 |
| 8 | 156.400 | 156.400 | 68 | 156.425 | 156.425 |
| 9 | 156.450 | 156.450 | 69 | 156.475 | 156.475 |
| 10 | 156.500 | 156.500 | 70 | RX Only | 156.525 |
| 11 | 156.550 | 156.550 | 71 | 156.575 | 156.575 |
| 12 | 156.600 | 156.600 | 72 | 156.625 | 156.625 |
| 13 | 156.650 | 156.650 | 73 | 156.675 | 156.675 |
| 14 | 156.700 | 156.700 | 74 | 156.725 | 156.725 |
| 15 | 156.750 | 156.750 | 75 | 156.775 | 156.775 |
| 16 | 156.800 | 156.800 | 76 | 156.825 | 156.825 |
| 17 | 156.850 | 156.850 | 77 | 156.875 | 156.875 |
| 18 | 156.900 | 161.500 | 78 | 156.925 | 161.525 |
| 19 | 156.950 | 161.550 | 79 | 156.975 | 161.575 |
| 20 | 157.000 | 161.600 | 80 | 157.025 | 161.625 |
| 21 | 157.050 | 161.650 | 81 | 157.075 | 161.675 |
| 22 | 157.100 | 161.700 | 82 | 157.125 | 161.725 |
| 23 | 157.150 | 161.750 | 83 | 157.175 | 161.775 |
| 24 | 157.200 | 161.800 | 84 | 157.225 | 161.825 |
| 25 | 157.250 | 161.850 | 85 | 157.275 | 161.875 |
| 26 | 157.300 | 161.900 | 86 | 157.325 | 161.925 |
| 27 | 157.350 | 161.950 | 87 | 157.375 | 157.375 |
| 28 | 157.400 | 162.000 | 88 | 157.425 | 157.425 |
| 60 | 156.025 | 160.625 | | | |

FREQUENCY PLAN - CANADA

| CH | Frequency (MHz) | | CH | Frequency (MHz) | |
|-------------|-----------------|---------|-----------|-----------------|---------|
| | Transmit | Receive | | Transmit | Receive |
| WX01 | Weather Channel | 163.275 | 23 | 157.150 | 161.750 |
| WX02 | Weather Channel | 162.550 | 24 | 157.200 | 161.800 |
| WX03 | Weather Channel | 162.400 | 25 | 157.250 | 161.850 |
| WX04 | Weather Channel | 162.475 | 26 | 157.300 | 161.900 |
| WX05 | Weather Channel | 162.425 | 27 | 157.350 | 161.950 |
| WX06 | Weather Channel | 162.450 | 28 | 157.400 | 162.000 |
| WX07 | Weather Channel | 162.500 | 60 | 156.025 | 160.625 |
| WX08 | Weather Channel | 162.525 | 61 | 156.075 | 156.075 |
| WX09 | Weather Channel | 161.650 | 62 | 156.125 | 156.125 |
| WX10 | Weather Channel | 161.775 | 64 | 156.225 | 156.225 |
| 1 | 156.050 | 160.650 | 65 | 156.275 | 156.275 |
| 2 | 156.100 | 160.700 | 66 | 156.325 | 156.325 |
| 3 | 156.150 | 160.750 | 67 | 156.375 | 156.375 |
| 4 | 156.200 | 156.200 | 68 | 156.425 | 156.425 |
| 5 | 156.250 | 156.250 | 69 | 156.475 | 156.475 |
| 6 | 156.300 | 156.300 | 70 | RX Only | 156.525 |
| 7 | 156.350 | 156.350 | 71 | 156.575 | 156.575 |
| 8 | 156.400 | 156.400 | 72 | 156.625 | 156.625 |
| 9 | 156.450 | 156.450 | 73 | 156.675 | 156.675 |
| 10 | 156.500 | 156.500 | 74 | 156.725 | 156.725 |
| 11 | 156.550 | 156.550 | 77 | 156.875 | 156.875 |
| 12 | 156.600 | 156.600 | 78 | 156.925 | 156.925 |
| 13 | 156.650 | 156.650 | 79 | 156.975 | 156.975 |
| 14 | 156.700 | 156.700 | 80 | 157.025 | 157.025 |
| 15 | 156.750 | 156.750 | 81 | 157.075 | 157.075 |
| 16 | 156.800 | 156.800 | 82 | 157.125 | 157.125 |
| 17 | 156.850 | 156.850 | 83 | 157.175 | 157.175 |
| 18 | 156.900 | 161.500 | 84 | 157.225 | 161.825 |
| 19 | 156.950 | 161.550 | 85 | 157.275 | 161.875 |
| 20 | 157.000 | 161.600 | 86 | 157.325 | 161.925 |
| 21 | 157.050 | 157.050 | 87 | 157.375 | 161.975 |
| 22 | 157.100 | 157.100 | 88 | 157.425 | 162.025 |

FREQUENCY PLAN - USA

| CH | Frequency (MHz) | | CH | Frequency (MHz) | |
|-------------|-----------------|---------|-----------|-----------------|---------|
| | Transmit | Receive | | Transmit | Receive |
| WX01 | Weather Channel | 163.275 | 24 | 157.200 | 161.800 |
| WX02 | Weather Channel | 162.550 | 25 | 157.250 | 161.850 |
| WX03 | Weather Channel | 162.400 | 26 | 157.300 | 161.900 |
| WX04 | Weather Channel | 162.475 | 27 | 157.350 | 161.950 |
| WX05 | Weather Channel | 162.425 | 28 | 157.400 | 162.000 |
| WX06 | Weather Channel | 162.450 | 61 | 156.075 | 156.075 |
| WX07 | Weather Channel | 162.500 | 63 | 156.175 | 156.175 |
| WX08 | Weather Channel | 162.525 | 64 | 156.225 | 156.225 |
| WX09 | Weather Channel | 161.650 | 65 | 156.275 | 156.275 |
| WX10 | Weather Channel | 161.775 | 66 | 156.325 | 156.325 |
| 1 | 156.050 | 156.050 | 67 | 156.375 | 156.375 |
| 3 | 156.150 | 156.150 | 68 | 156.425 | 156.425 |
| 5 | 156.250 | 156.250 | 69 | 156.475 | 156.475 |
| 6 | 156.300 | 156.300 | 70 | RX Only | 156.525 |
| 7 | 156.350 | 156.350 | 71 | 156.575 | 156.575 |
| 8 | 156.400 | 156.400 | 72 | 156.625 | 156.625 |
| 9 | 156.450 | 156.450 | 73 | 156.675 | 156.675 |
| 10 | 156.500 | 156.500 | 74 | 156.725 | 156.725 |
| 11 | 156.550 | 156.550 | 77 | 156.875 | 156.875 |
| 12 | 156.600 | 156.600 | 78 | 156.925 | 156.925 |
| 13 | 156.650 | 156.650 | 79 | 156.975 | 156.975 |
| 14 | 156.700 | 156.700 | 80 | 157.025 | 157.025 |
| 15 | RX Only | 156.750 | 81 | RX Only | 157.075 |
| 16 | 156.800 | 156.800 | 82 | 157.125 | 161.725 |
| 17 | 156.850 | 156.850 | 83 | RX Only | 157.175 |
| 18 | 156.900 | 156.900 | 84 | 157.225 | 161.825 |
| 19 | 156.950 | 156.950 | 85 | 157.275 | 161.875 |
| 20 | 157.000 | 157.000 | 86 | 157.325 | 161.925 |
| 21 | 157.050 | 157.050 | 87 | 157.375 | 161.975 |
| 22 | 157.100 | 157.100 | 88 | 157.425 | 157.425 |
| 23 | 157.150 | 157.150 | | | |

WARRANTY

GME limit this warranty to the original purchaser of the equipment. GME warrant this product to be free from defects in material and workmanship for a period of 1 years from the date of purchase from the authorised retailer.

Should the product require servicing during this period, all labour and parts used to effect repairs will be supplied free of charge. GME reserve the right to determine whether damage has been occasioned by accident, misuse or improper installation, whereby the Warranty could be void. In the event of a defect occurring during the Warranty period, the original purchaser may return the defective unit along with suitable proof of purchase (i.e. receipt, credit card slip etc.) and a full description of the defect to the retailer from whom the unit was purchased.

The retailer will forward the unit to an authorised GME Service Depot in your State.

All freight charges incurred for transportation by the retailer or GME are the purchasers' responsibility.

International customers should contact their in-country distributor or contact GME directly at: info@gme.net.au

GME AFTER SALES SERVICE

Your GME GX620 is especially designed for the environment encountered in mobile or portable installations. The use of all solid state circuitry, careful design and rigorous testing, result in high readability. Should failure occur however, GME maintain a fully equipped service facility and spare parts stock to meet the customer's requirements long after expiry of the warranty period.



A Division of

Standard Communications PTY. LTD.

Head Office:

SYDNEY

Locked Bag 2086, North Ryde, N.S.W. 1670, Australia.

T: +61 (0)2 9844 6666 F: +61 (0)2 9844 6600

Branches:

MELBOURNE

7 Micro Circuit,
DANDENONG STH 3165.

T: (03) 9798 0988
F: (03) 9798 0177

ADELAIDE

Unit 1, 14 Phillips St.,
THEBARTON 5031.

T: (08) 8234 2633
F: (08) 8234 5138

PERTH

Unit 1, 10-12 Harvard Way,
CANNING VALE 6155.

T: (08) 9455 5744
F: (08) 9455 3110

BRISBANE

Unit 1, 89-101 Factory Rd.,
OXLEY 4075.

T: (07) 3278 6444
F: (07) 3278 6555

SYDNEY

Unit B, 22-24 College St.,
GLADESVILLE 2111.

T: (02) 9879 8888
F: (02) 9816 4722

AUCKLAND

24 Bishop Dunn Place,
BOTANY STH 2013 N.Z.

T: (09) 274 0955
F: (09) 274 0959

For customers outside Australia and New Zealand please contact your local GME retailer
or email: export@gme.net.au

Web Site: www.gme.net.au