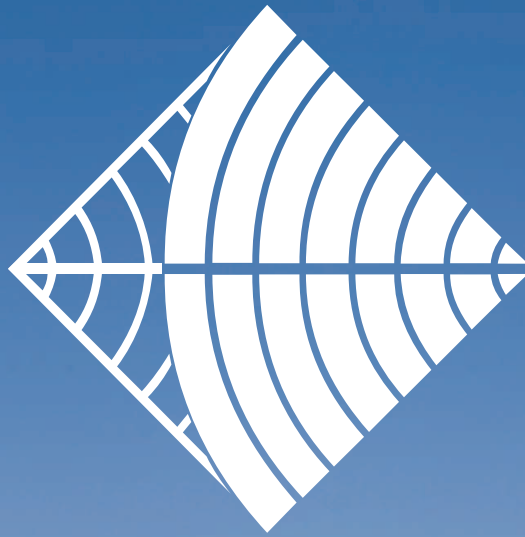


80
CHANNEL
READY



RFI



Your Critical Link
UHF CB Antennas

RFI has been servicing the needs of the wireless communications market for over 30 years. A cornerstone of this has been the design and manufacture of high quality mobile and base station antennas for the mission critical public safety and emergency services agencies across the globe. This design ethos is built into our range of UHF CB antennas.

Fitting any other antenna to your vehicle is a compromise in quality, performance and ultimately safety. While we strive to bring you competitive pricing, it's our quality and performance which sets us apart from the competition.

You are buying the best when buying RFI Antennas, "Your Critical Link" in any communications system.

Q-Fit® SERIES

The high gain CDQ5000 and ultra-high gain CDQ8000 UHF CB antennas are based on our successful CD5000 antenna and employ the new Q-Fit® removable whip system for fast and simple removal when entering low height areas such as car parks, car washes or for security.

- Extremely robust fibreglass radome antenna with marine grade chrome plated brass and stainless steel fittings.
- Patented PCB based Meander™ collinear design offering the ultimate in pattern and gain stability.
- 5 dBi (CDQ5000) and 8 dBi (CDQ8000) gain across the full 477 MHz UHF CB band.
- Available in black or white.
- Supplied with 5 metres of Cellfoil® low loss cable terminated with FME female connector and supplied with UHF adaptor.

Model	Gain	Height
CDQ5000 (black)	5 dBi	990 mm
CDQ5000-W (white)	5 dBi	990 mm
CDQ8000 (black)	8 dBi	2080 mm
CDQ8000-W (white)	8 dBi	2080 mm



CD5000 SERIES

The CD5000 is a high gain mobile UHF CB antenna providing genuine 5 dBi gain and is ideally suited for use in fringe areas and country applications where performance is critical.

- Extremely robust fibreglass radome antenna with marine grade chrome plated brass and stainless steel fittings.
- Patented PCB based Meander™ collinear design offering the ultimate in pattern and gain stability.
- Available in black or white.
- Supplied with 5 metres of Cellfoil® low loss cable terminated with FME female connector and supplied with UHF adaptor.

Model	Gain	Height
CD5000 (black)	5 dBi	900 mm
CD5000-W (white)	5 dBi	900 mm

MATCHING CELLULAR ANTENNAS

RFI also manufactures a range of matching multi-band cellular antennas. These are identical in appearance to the CD5000, Q-Fit® CDQ5000 and CDQ8000 UHF CB antennas, allowing matching antennas to be installed on a vehicle for the more discerning owner.



Durability

CD900 SERIES

The CD900 Series are high performance elevated feed antennas which can be used in virtually any mounting position.

Because of its elevated feed design, the antenna sits high providing excellent all round performance regardless of mounting position.

- Excellent performance from this 6.5 dBi elevated feed antenna.
- Ground independent design.
- Utilises RFI's Phasemaster whip for unsurpassed performance and strength.
- Available in 4 versions; with or without spring in either bright chrome or black finish.
- Supplied with 5 metres of Cellfoam[®] low loss cable terminated with FME female connector and supplied with UHF adaptor.

Model	Gain	Height
CD920-71-75 (chrome / no spring)	6.5 dBi	815 mm
CD921-71-75 (chrome / with spring)	6.5 dBi	910 mm
CD930-71-75 (black / no spring)	6.5 dBi	815 mm
CD931-71-75 (black / with spring)	6.5 dBi	910 mm



CD63 SERIES MOPOLE™

The CD63 Series Mopole™ antennas offer complete versatility in mounting positions.

The CD63 Series extraordinary performance is made possible by its patented high impedance matching circuit in the base coil.

- Ground independent design.
- Ruggedized design using a flexible stainless steel.
- 6 dBi gain delivers excellent performance.
- Available in two mounting versions with either removable whip/base on MBC (PL259) base or threaded stud and nut.
- Both versions supplied with 5 metres of RG58C/U cable terminated with FME female connector and supplied with UHF adaptor.

Model	Gain	Height
CD63-71-75 (Stud mount)	6 dBi	795 mm
CD63-71-55 (PL259)	6 dBi	810 mm



CD33 SERIES MOPOLE™

The CD33 Series Mopole™ antenna is compact and virtually indestructible, making it perfect for commercial and industrial applications.

- Ground independent design.
- Ruggedized design.
- Supplied with 5 metres of RG58C/U cable terminated with FME female connector and supplied with UHF adaptor.

Model	Gain	Height
CD33-71-75	4 dBi	310 mm



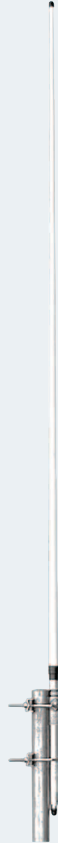
COL477 SERIES

The COL477 Series omni directional base station antennas are designed specifically to provide maximum range and performance in all UHF CB band.

Two models are offered according to gain and coverage requirements.

- Specifically designed for UHF CB requirements.
- High gain omni-directional pattern.
- Light weight and easy to mount.
- DC grounded for lightning protection and reduction of precipitation noise.
- Both antennas are terminated with an integrated N type connector.

Model	Gain	Height
COL477-6	6.1 dBi	2300 mm
COL477-9	9.6 dBi	4000 mm



HS Series Hockey Stick Mount

Also available is a range of L-shaped fascia brackets for simple and reliable antenna installations. The hockey stick allows the antenna to be mounted above the roof line for unobstructed coverage.

Note: These hockey sticks are only recommended for use with COL477-6.

Model	Height
HS48	1200mm
HS63	1600mm
HS72	1800mm



ROOF MOUNT ANTENNAS

Roof mount antennas offer an affordable alternative to elevated feed antennas.

The SW25 and MSW25 whips can be mounted on either a bracket or the roof using a standard 5/16" - 25 TPI base (RFI part number: MB10 or MB12). Both the MB10 and MB12 are available with or without cable.

Note: Mounting position are a consideration when using these antennas, please refer to the "Antenna Selection: The Facts" on the next page.

Model	Gain	Height
SW25 (whip only)	Unity	135 mm
MSW25 (whip only)	4.5 dBi	610 mm
MB10	n/a	n/a
MB12	n/a	n/a



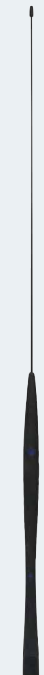
MB10



MB12



SW25



MS25

CB RADIO EXTENSION SPEAKERS

RFI have a range of Extension Speakers to improve the sound quality of your in-car UHF CB radio.



324/328



424



554

Model	Impedance / Watts	Dimensions
324 Extension Speaker	4 Ohm / 5 Watts	82 x 82 x 56mm
328 Extension Speaker	8 Ohm / 5 Watts	82 x 82 x 56mm
424 Extension Speaker	4 Ohm / 5 Watts	114 x 66 x 56mm
554 Extension Speaker	4 Ohm / 10 Watts	109 x 109 x 66mm

MOUNTING ACCESSORIES

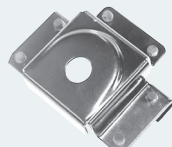
RFI supply a full range of mounting solutions to suit your needs including:



Mirror mounts



Gutter mounts



Bonnet or boot mounts



Bull bar mounts



Trunk lip mounts



Antenna Selection: The Facts



Why is the antenna important?

The antenna is a device for transmitting and/or receiving signals - the eyes and ears of your communication system. A good antenna is designed to be "in-tune" to the signal you are seeking - your phone or radio "sees" the signal and you hear a clear conversation. Use a poor antenna and you simply cannot communicate effectively.

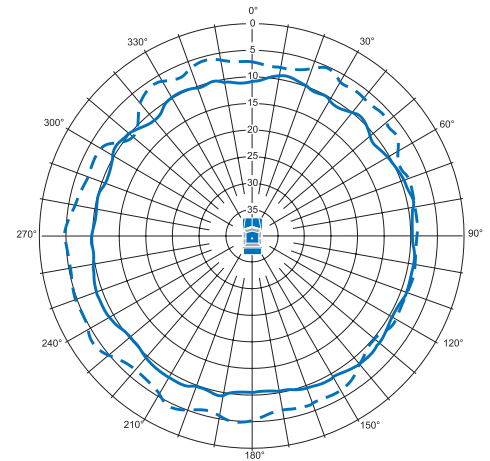
Antenna gain and radiation patterns

Mobile antennas should radiate in a symmetrical pattern 360° around the antenna.

As gain is increased, the radiation gets compressed into a thinner pattern and reaches out further to the sides. The more gain an antenna has the thinner the pattern becomes and the further the signal can travel or reach. However a thinner radiation pattern may prevent strong signal reception when driving through hills and valleys or amongst built up areas such as city centres where base stations tend to be located on top of buildings.

Another thing to consider is whether the antenna is ground plane independent or not. Mounting an antenna that isn't designed to work without a ground plane anywhere but in the middle of your cars roof will distort the radiation pattern so you no longer get a nice 360° radiation patterns resulting in dropped calls. So check the following with your dealer:

1. Will most of my use be in the city or travelling through hills and valleys? If so choose a lower gain antenna. If most of your use will be in relatively flat terrain then a higher gain option may suit your needs.
2. Is the antenna ground independent? If not, are you willing to mount it in the middle of the roof of your vehicle?



What is antenna gain?

An antenna must physically meet certain requirements to deliver its claimed gain.

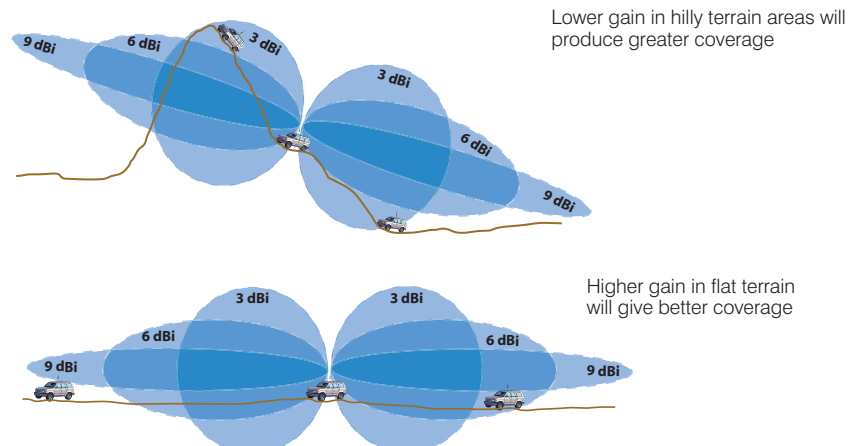
The laws of physics cannot be defeated and without these characteristics there is simply no way to increase antenna gain.

Various antenna manufacturers use different references when declaring their gain figures. In the absence of a defined reference, some claims made in catalogues and on retail packaging by some manufacturers are just plain wrong.

When selecting an antenna be sure to make a couple of basic checks:

1. Look for the stated gain reference, we would suggest either dBi, dBd or dB over 1/4 wave. We can't promise that this means the manufacturer has actually tested the gain (like RFI do) but it certainly indicates that they know they need a reference.
2. Compare a couple of antennas that are hanging next to each other in a store, or check the physical length of the antenna in a catalogue. If one is claiming 6.5dBi and is 900mm long and another is claiming 9dBi at a similar length then consider how can this be true.

For more information contact 1300 000 RFI or rfi.com.au

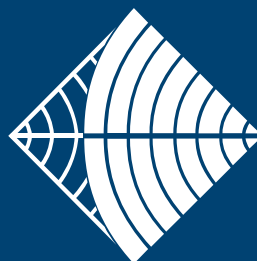


Quality

Durability

Reliability

Your Nearest Dealer is



RFI

rfi.com.au

1300 000 734